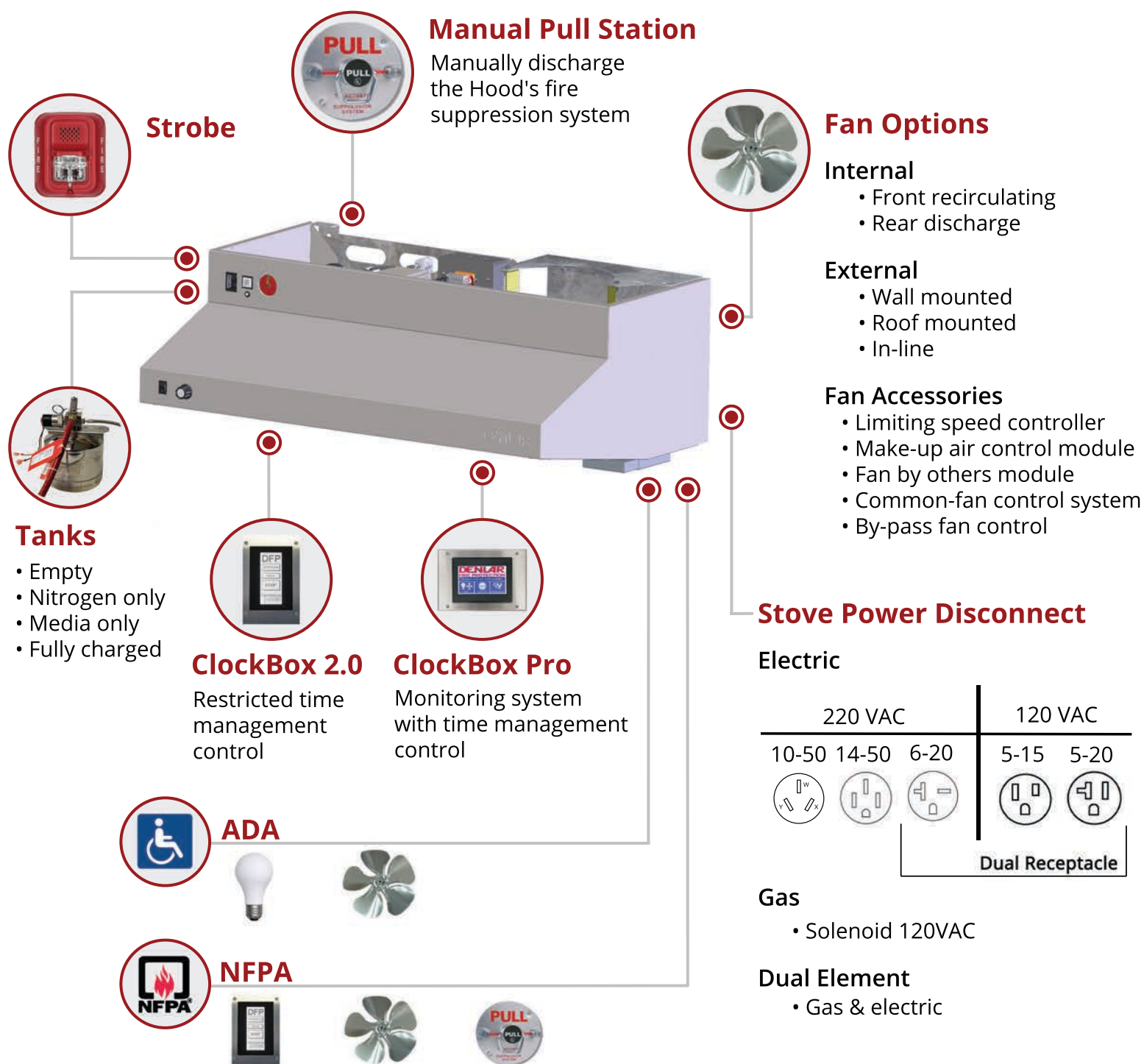


D1000 OPTIONS BREAKDOWN

All DENLAR products are engineered and manufactured in the USA and are NSF  certified.

Hood sizes available in 30" and 36".

The DENLAR D1000 is the industry's first fully integrated, pre-engineered fire suppression range hood system and offers customization options to fit your specific application.



Category	Part Number	Detail	Purpose
Stove Power Disconnect	D1000-ED-220	Receptacle 220VAC NEMA 14-50 (1X).	Allow the Cooking Environment to be ON or OFF. If Hood's Fire and Temperature components are under acceptable conditions, it allows the Power Disconnect for the cooking environment to be energized.
		Receptacle 220VAC NEMA 6-20 (1X).	
	D1000-E-120	Receptacle 120VAC NEMA 5-15 (1X).	
		Receptacle 120VAC NEMA 5-20 (1X).	
	D1000-DRD 6-20	Receptacle 220VAC NEMA 6-20 (2X).	
	D1000-DRD 5-15	Receptacle 120VAC NEMA 5-15 (2X).	
	D1000-DRD 5-20	Receptacle 120VAC NEMA 5-20 (2X).	
	D1000-DED-120	Gas Solenoid 120 VAC (1X).	
		Receptacle 120VAC NEMA 5-15 (1X).	
		Gas Solenoid 120 VAC (1X).	
	D1000-DED-220	Receptacle 120VAC NEMA 5-20 (1X).	
		Gas Solenoid 120 VAC (1X).	
		Receptacle 220VAC NEMA 14-50 (1X).	
	D1000-DED-220	Gas Solenoid 120 VAC (1X).	
		Receptacle 220VAC NEMA 14-50 (1X).	
	D1000-G	Receptacle 220VAC NEMA 6-20 (1X).	
	D1000-G	Gas Solenoid 120 VAC (1X).	
ADA	D1000-ADA	Toggle Switch (2X) for fan and light control. Plenum Wire (15ft).	Provide the ability to Disabled Operators, to energize the Hood's Fan and Light from a remote set of toggle switches. The Fan will be turned on to Full Speed
ClockBox	CLBX	HMI - Touch Screen (1X). Control cable (25ft). PLC - Control Module (1X).	Provide authorized control to the user to be able to energize the cooking environment by entering a password. A 120 minute timer will begin allowing the Power Disconnect to be energized, the Power disconnect will be de-energized after 120 minutes..
ClockBox Pro	CLBX-PRO	HMI - Touch Screen (1X). Control cable (25ft). PLC - Control Module (1X).	Provide authorized control function of the range same as the standard ClockBox (above). Provides fan and light controls, system analysis and the ability to tie into a building monitoring system.
NFPA	NFPA	Clock Box (1X).	To meet the NFPA101 requirements of 500CFM, manual pull station and 120 minute interlock system. See individual items for additional information.
		MPK (1X).	
		High Output Fan (1X).	
NSF	Comes Standard on All D1000 models	National Sanitary Foundation Compliance for Hood (1X).	Use NSF Compliance sealer to seal corners that expose the outside of the hood to potential grease accumulation and/or penetration to the inside of the hood.
Tanks	D1000-TANK-E	Fully Assembled Tank Empty (1X). Test Links (2X). Plumbing's Charge Adapter (1X).	An empty D1000 Tank that can be pressurized on site for testing purposes only. Available for expedited shipping options.
	D1000-TANK-TEST	Fully Assembled Tank charged with Nitrogen Only (1X). Test Links (2X). Plumbing's Charge Adapter (1X).	A pressurized tank without media available for testing purposes so that the media is not discharged when performing a discharge test.
Tanks	D1000-TANK-SA	Fully Assembled Tank filled with Media Only (1X). Plumbing's Charge Adapter (1X).	An unpressurized tank containing suppression media only. The Tank will need to be pressurized prior to use. Available for expedited shipping options.
	D1000-TANK-FC	Fully Assembled Tank Fully Charged (1X).	A pressurized tank containing suppression media designed to suppress a fire.
Sizes	D1030	30" Hood (1X).	Designed to protect a 30" Range
	D1036	36" Hood (1X).	Designed to protect a 36" Range
Strobe	D1000-Strobe	Strobe and Horn Annunciator (1X). Junction Box (1X). Plenum Cable (15ft). Lever Actuated Microswitch assembly (1X).	Visually and Audibly indicates a physical discharge of the Fire Suppression System in the Hood.
Manual Pull Station	D1000-MPK	Station, Pull Remote for Wire Rope (1X). Pulley, Corner Remote Pull Station (3X). Junction Box (1X). Wire Rope (25ft).	To provide the ability to manually discharge the Hood's Fire Suppression system physically by using a remote Pull Tab Handle.
Fans	D1000-F	Front Discharge, recirculating Fan Assembly (1X).	An integral fan, to provide the exhaust air flow of the fan to be recirculated into the space environment from the front of the Hood.
	D1000-R	Rear Discharge Fan Assembly (1X).	An integral fan, to provide the exhaust air flow of the fan to be discharged to the rear of the Hood.
	D1000-WF	Wall Mounted Ducted Fan Assembly (1X). Plenum Cable (25ft).	An external fan, to provide the exhaust air flow of the fan to be discharged to an outside Wall mounted Fan Assembly.
	D1000-RF	Roof Mounted Ducted Fan Assembly (1X). Plenum Cable (50ft). Duct Increaser Adapter (1X).	An external fan, to provide the exhaust air flow of the fan to be discharged to a Roof mounted Fan Assembly.
	D1000-IF	In-Line Mounted Ducted Fan Assembly (1X). Plenum Cable (35ft). Duct Increaser Adapter (1X).	An external fan, to provide the exhaust air flow of the fan to be discharged to an in-line ducted mounted Fan Assembly.
Fan Accessories	D1000-LSC	Speed Control Module (1X). Plenum Wire (15ft).	An external secondary speed control designed to provide maximum threshold of the Fan's speed (CFM) from the User's control.
	D1000-MACM	Relay Control Module (1X) for make up air. Plenum Wire (15ft).	To provide the use of Make-Up Air System activated by the operation of the Fan.
	D1000-FBO	Contactor Module (1X) for other fans Plenum Wire (15ft).	To allow the use of a Fan not provided by Denlar Fire Protection.
	D1000-CFCS	Power Distribution Block Module (1X). Fan By Others Module (2-8X).	To allow the use of a single Common-Fan powered by a group of multiple Hoods.
	D1000-BPFC	Relay Control Module (1X). Bypass Switch (1X) with Plenum Wire (50ft).	To provide the ability to energize multiple fans at the same time.