

DENLAR D1000 ACCESSORY DATASHEETS

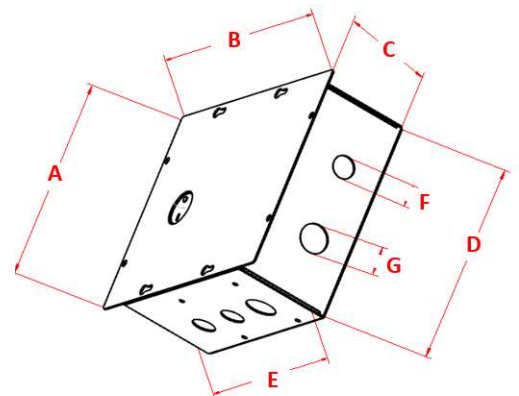
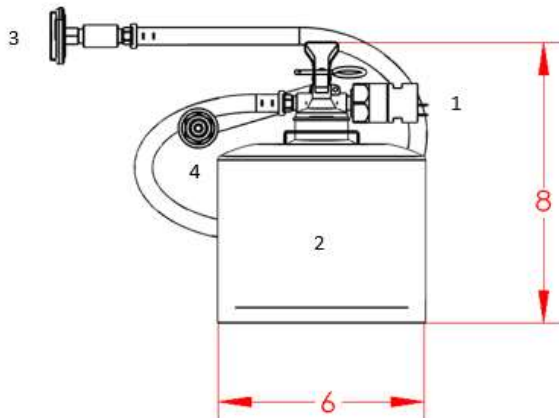
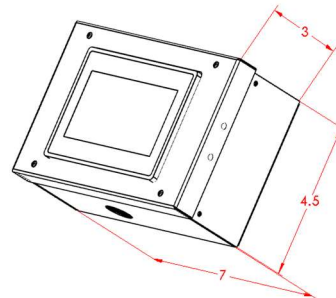
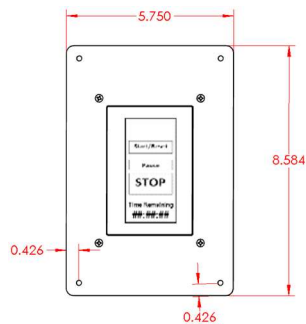
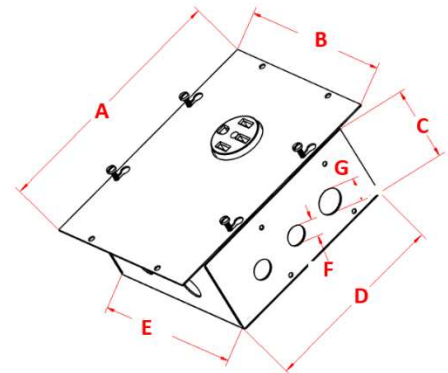
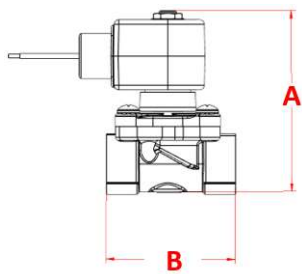


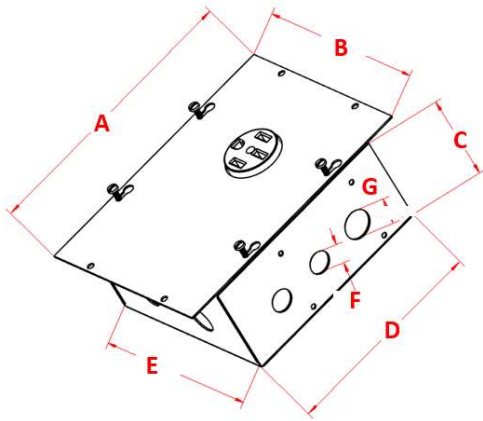
TABLE OF CONTENTS

SECTION	SUBSECTION	PAGE
POWER DISCONNECT		
	ELECTRICAL DISCONNECT	3
	GAS DISCONNECT	4
	DUAL RECEPTACLE DISCONNECT	5
	DUAL ELEMENT DISCONNECT	6-7
	D1000-PD4X	8
TANKS		
	TANK FULLY CHARGED	9
	TANK WITH AMEREX AND NOT CHARGED	10
	TANK TEST – NITROGEN CHARGED ONLY	11
	TANK NOT CHARGED	12
CLOCK BOX		
	CLOCK BOX	13-14
MANUAL PULL STATION		
	MANUAL PULL KIT	15
ALARMS		
	HORN AND STROBE	16
FAN ACCESSORIES		
	FAN BY OTHERS	17
	MAKE-UP AIR CONTROL MODULE	18
	CFM LIMITING SPEED CONTROL	19
ADA CONTROLS		
	AMERICAN WITH DISABILITIES ACT	20
COVERS		
	TOP COVERS	21

ELECTRICAL DISCONNECT

		ELECTRICAL SPECIFICATIONS																					
		RECEPTACLE RATINGS			COIL RATINGS																		
MODEL	PART NUMBER	NEMA	OUTPUT VOLTS (AC)	OUTPUT CURRENT (AMPS)	COIL VOLTAGE (AC)	PHASE	FREQUENCY (Hz.)	FUSE (AMPS)	FUSE TYPE	OPERATING CURRENT (AMPS)													
D1000-E-120 5-15	ASY-300068	5-15R	120	15	120	1	60	0.5	5X20mm CARTRIDGE	0.25													
DS-E-120 5-15	ASY-300071			20																			
D1000-E-120 5-20	ASY-300035																						
DS-E-120 5-20	ASY-300038																						
D1000-E-220 6-20	ASY-300067	6-20R	220	50							50												
DS-E-220 6-20	ASY-300070																						
D1000-E-220 10-50	ASY-300055																						
DS-E-220 10-50	ASY-300069	10-50R	14-50R																				
D1000-E-220 14-50	ASY-200074																						
DS-E-220 14-50	ASY-200178																						

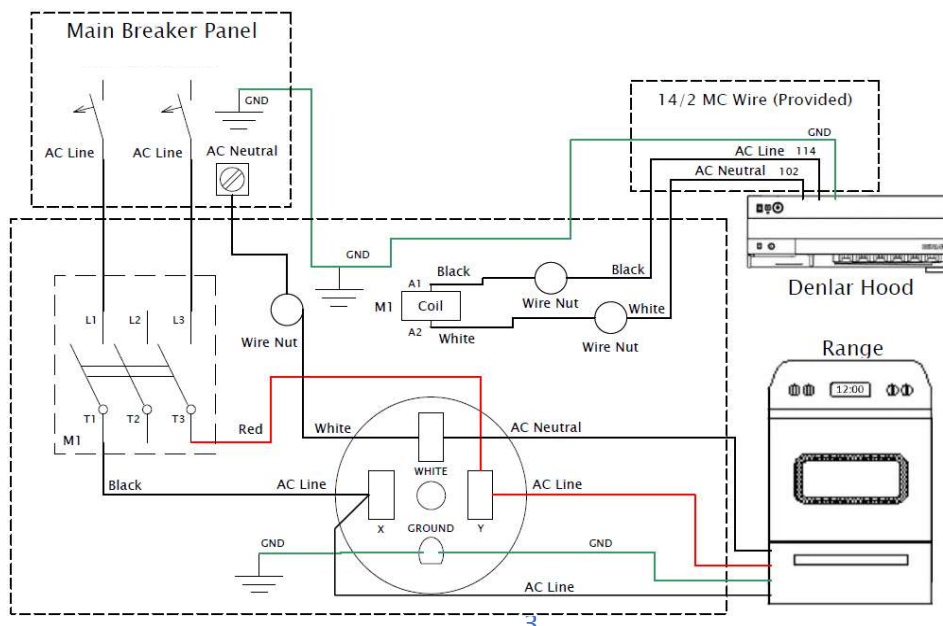
DIMENSIONS AND WEIGHT



A	B	C	D	E	F	G
10.5	8	3.6	8	8	0.8	1.1
Measurements in Inches						

MATERIAL INFORMATION			
WEIGHT (Lbs.)	MATERIAL	MOUNTING TYPE	MOUNTING HEIGHT
5.4	GALVANIZED	SURFACE OR FLUSH MOUNT	SEE LOCAL CODES

SCHEMATIC



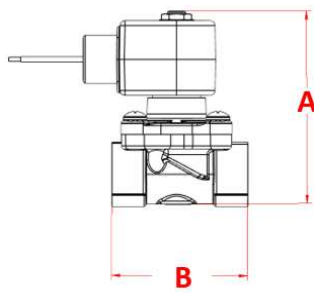
For NEMA
information
reference the
Receptacle
Ratings

GAS DISCONNECT

GAS VALVE ELECTRICAL SPECIFICATIONS										
MODEL	PART NUMBER	COIL VOLTAGE (AC)	PHASE	FREQUENCY (Hz.)	FUSE (AMPS)	OPERATING CURRENT (AMPS)	VALVE TYPE	FUNCTION	ACTUATION TYPE	COIL TYPE
D1000-G	ASY-200094	120	1	60	0.5	0.25	2-WAY	NORMALLY CLOSED	DIRECT LIFT	1/2" NPT CONDUIT, 18' LEADS, CLASS F, NEMA 4X
DS-G	ASY-200184									

MATERIAL INFORMATION												
BODY MATERIAL	SEAL MATERIAL	ORIFICE SIZE	PORT SIZE	NUMBER OF PORTS	PORT TYPE	MEDIA	MINIMUM PRESSURE DIFFERENTIAL	MAXIMUM PRESSURE DIFFERENTIAL	MINIMUM FLUID TEMPERATURE	MAXIMUM FLUID TEMPERATURE	FLOW COEFFICIENT	
BRASS	NBR	7/16"	3/4"	2	NPT	GENERAL PURPOSE FOR AIR, LIQUIDS, AND GASES	0 PSI	100 PSI (AC) PSI	0° F	185° F	5 Cv	

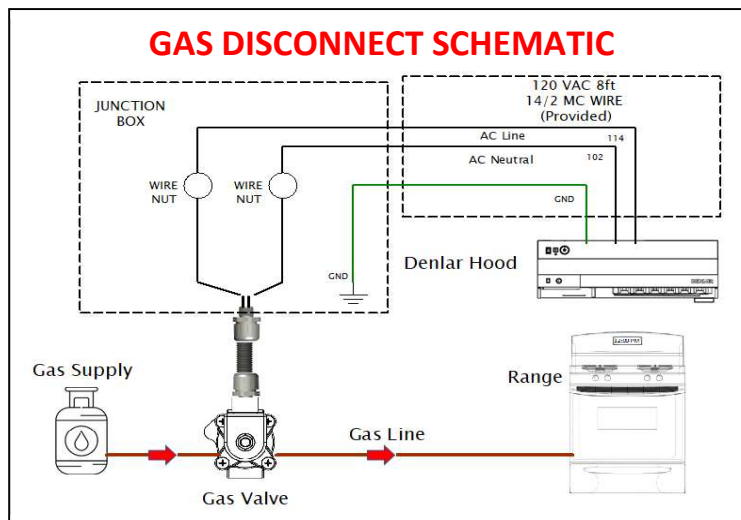
GAS VALVE DIMENSIONS



	A	B
Gas Valve	4	2.8

Measurements in Inches

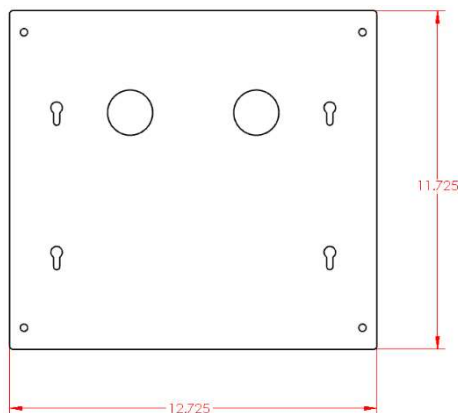
GAS DISCONNECT SCHEMATIC



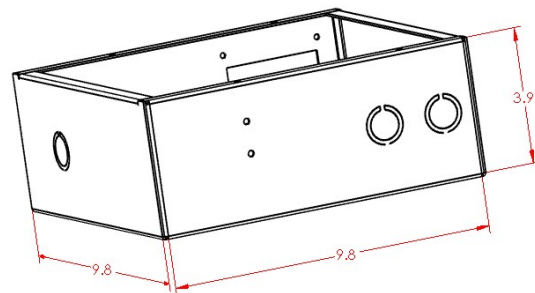
DUAL RECEPTACLE DISCONNECT

		ELECTRICAL SPECIFICATIONS								
		RECEPTACLE RATINGS			COIL RATINGS					
MODEL	PART NUMBER	NEMA	OUTPUT VOLTS (AC)	OUTPUT CURRENT (AMPS)	COIL VOLTAGE (AC)	PHASE	FREQUENCY (Hz.)	FUSE (AMPS)	FUSE TYPE	OPERATING CURRENT (AMPS)
D1000-DRD-120 5-15	ASY-300025	5-15R	120	15	120	1	60	0.5	5X20mm CARTRIDGE	0.25
DS-DRD-120 5-15				20						
D1000-DRD-120 5-20	ASY-300026	5-20R	20							
DS-DRD-120 5-20										
D1000-DRD-220 6-20	ASY-300027	6-20R	220	20	120	1	60	0.5	5X20mm CARTRIDGE	0.25
DS-DRD-220 6-20										

DRD DIMENSIONS

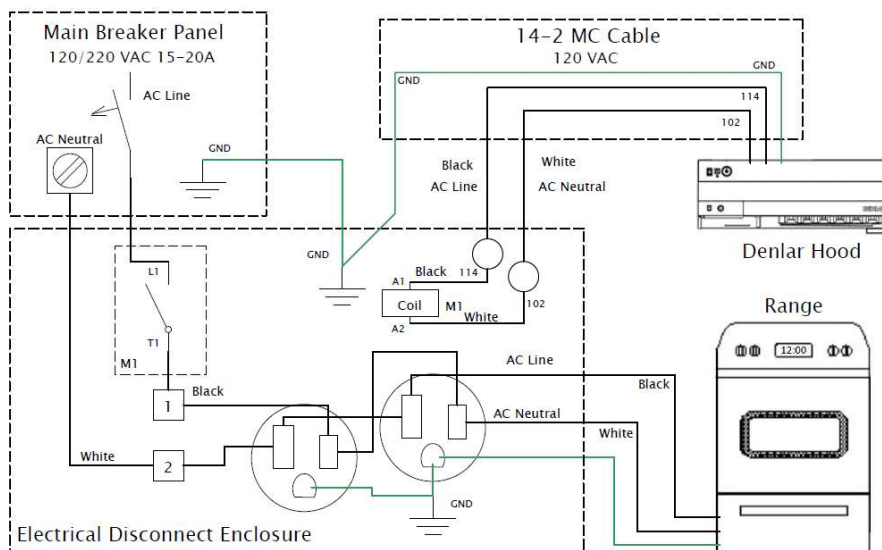


TOP COVER



ENCLOSURE

DUAL RECEPTACLE DISCONNECT SCHEMATIC

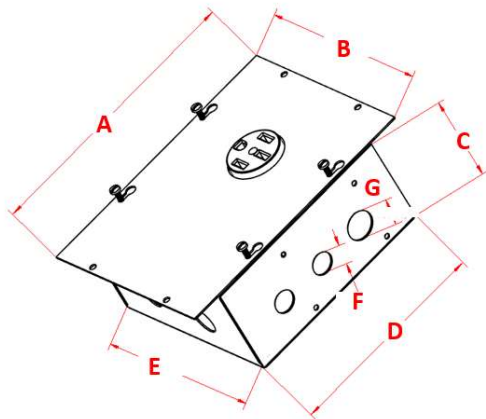


For NEMA
information
reference the
Receptacle
Ratings

DUAL ELEMENT DISCONNECT

		ELECTRICAL SPECIFICATIONS								
		RECEPTACLE RATINGS			COIL RATINGS					
MODEL	PART NUMBER	NEMA	OUTPUT VOLTS (AC)	OUTPUT CURRENT (AMPS)	COIL VOLTAGE (AC)	PHASE	FREQUENCY (Hz.)	FUSE (AMPS)	FUSE TYPE	OPERATING CURRENT (AMPS)
D1000-DED-120 5-15	ASY-300036	5-15R	120	15	120	1	60	0.5	5X20mm CARTRIDGE	0.25
DS-DED-120 5-15	ASY-300037									
D1000-DED-120 5-20	ASY-300036	5-20R	120	20						
DS-DED-120 5-20	ASY-300037									
D1000-DED-220 6-20	ASY-200068	6-20R	220	20						
DS-DED-220 6-20	ASY-300070									
D1000-DED-220 10-50	ASY-200068	10-50R	220	50						
DS-DED-220 10-50	ASY-300070									
D1000-DED-220 14-50	ASY-200068	14-50R	220	50						
DS-DED-220 14-50	ASY-300070									

DIMENSIONS AND WEIGHT



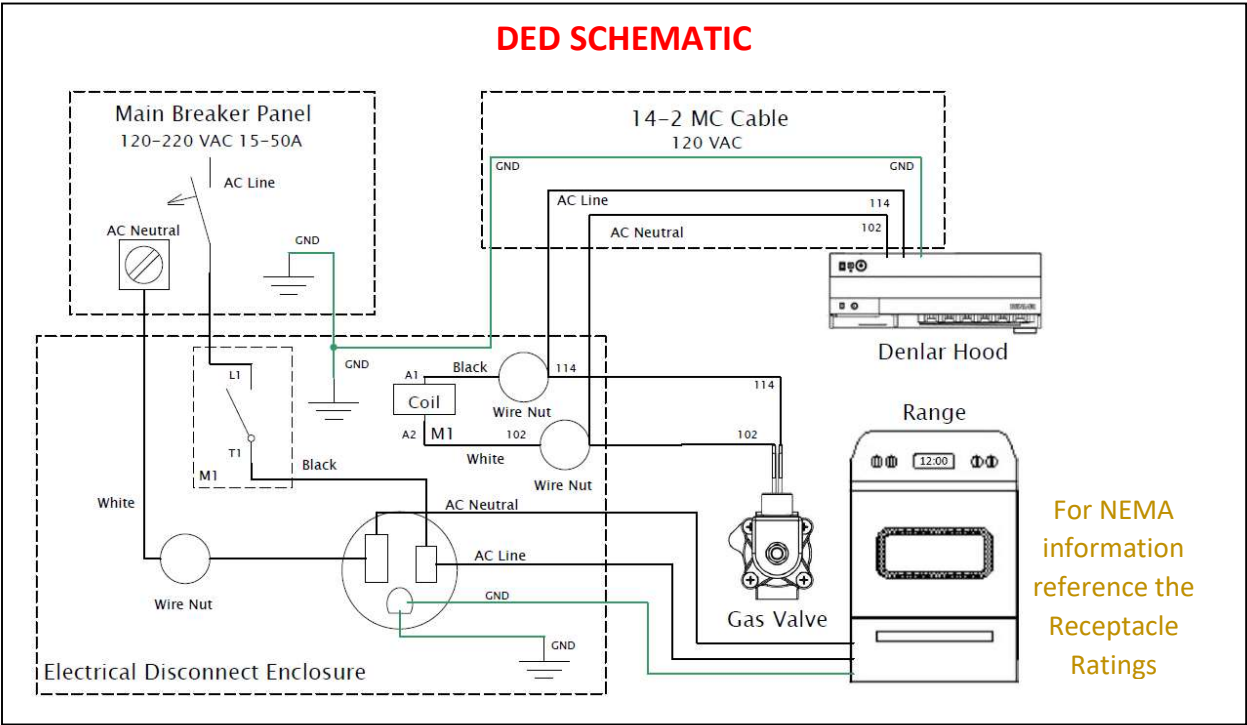
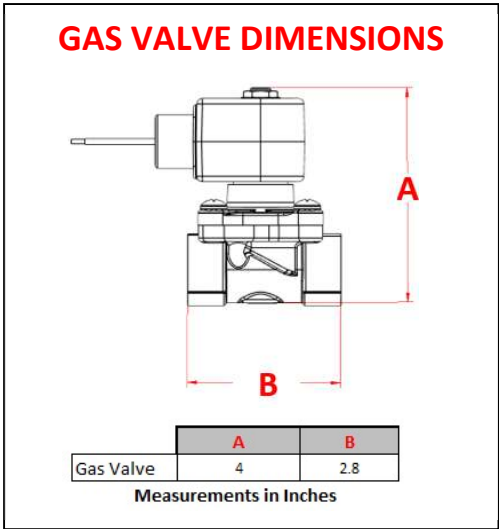
A	B	C	D	E	F	G
10.5	8	3.6	8	8	0.8	1.1
Measurements in Inches						

MATERIAL INFORMATION			
WEIGHT (Lbs.)	MATERIAL	MOUNTING TYPE	MOUNTING HEIGHT
5.4	GALVANIZED	SURFACE OR FLUSH MOUNT	SEE LOCAL CODES

		GAS VALVE ELECTRICAL SPECIFICATIONS								
MODEL	PART NUMBER	COIL VOLTAGE (AC)	PHASE	FREQUENCY (Hz.)	FUSE (AMPS)	OPERATING CURRENT (AMPS)	VALVE TYPE	FUNCTION	ACTUATION TYPE	COIL TYPE
D1000-DED-120	ASY-300036	120	1	60	0.5	0.25	2-WAY	NORMALLY CLOSED	DIRECT LIFT	1/2" NPT CONDUIT, 18' LEADS, CLASS F, NEMA 4X
DS-DED-120	ASY-300037									
D1000-DED-220	ASY-200068									
DS-DED-220	ASY-300070									

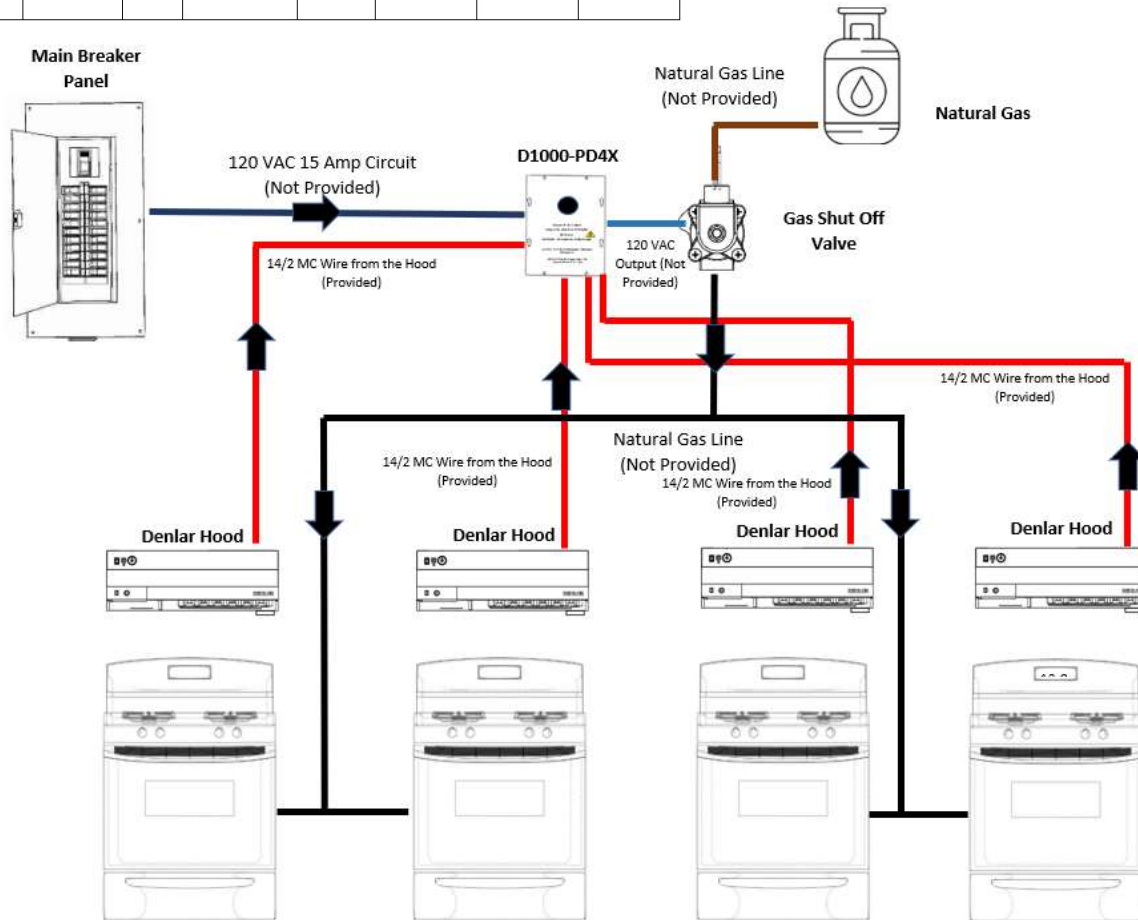
MATERIAL INFORMATION											
BODY MATERIAL	SEAL MATERIAL	ORIFICE SIZE	PORT SIZE	NUMBER OF PORTS	PORT TYPE	MEDIA	MINIMUM PRESSURE DIFFERENTIAL	MAXIMUM PRESSURE DIFFERENTIAL	MINIMUM FLUID TEMPERATURE	MAXIMUM FLUID TEMPERATURE	FLOW COEFFICIENT
BRASS	NBR	7/16"	3/4"	2	NPT	GENERAL PURPOSE FOR AIR, LIQUIDS, AND GASES	0 PSI	100 PSI (AC) PSI	0° F	185° F	5 Cv

DUAL ELEMENT DISCONNECT

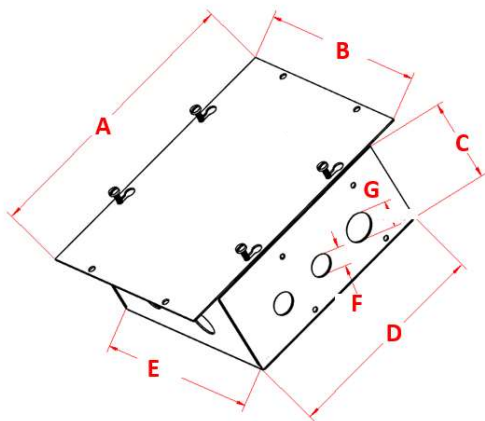


D1000-PD4X

D1000-PD4X ELECTRICAL SPECIFICATIONS							
	COIL VOLATGE (AC)	PHASE	FREQUENCY (Hz.)	FUSE (AMPS)	OPERATING CURRENT (AMPS)	INPUT VOLTS (AC)	OUTPUT VOLTS (AC)
D1000-PD4X	120	1	60	0.5	0.25	120	120



DIMENSIONS AND WEIGHT



A	B	C	D	E	F	G
10.5	8	3.6	8	8	0.8	1.1
Measurements in Inches						

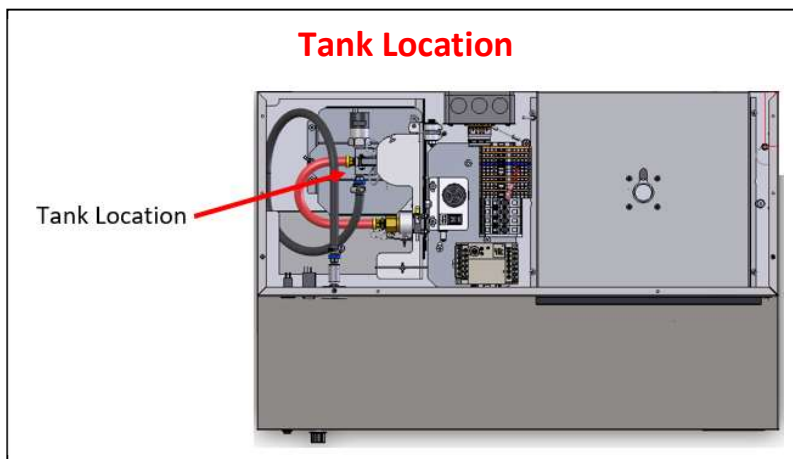
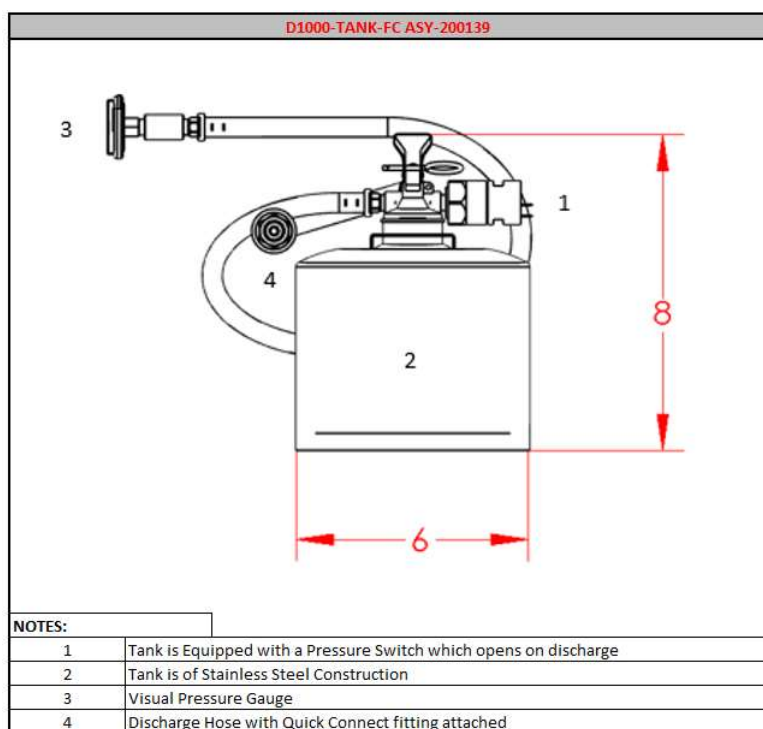
MATERIAL INFORMATION			
WEIGHT (Lbs.)	MATERIAL	MOUNTING TYPE	MOUNTING HEIGHT
5.4	GALVANIZED	SURFACE OR FLUSH MOUNT	SEE LOCAL CODES

TANK FULLY CHARGED

D1000-TANK-FC

(Integral to all D1000 Hood Models)

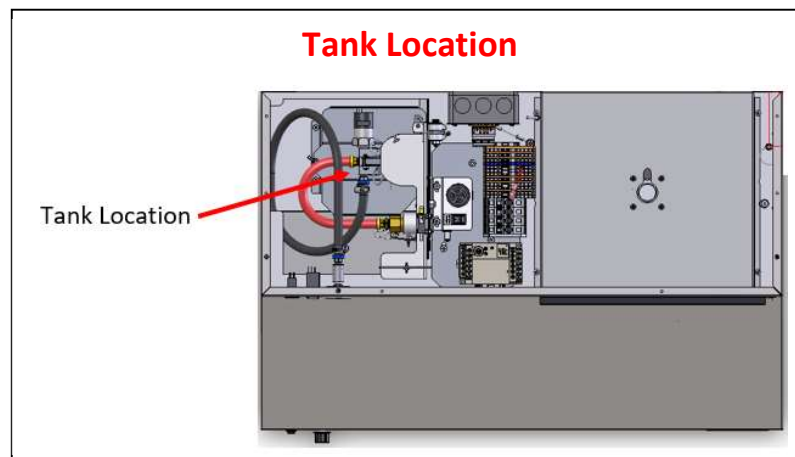
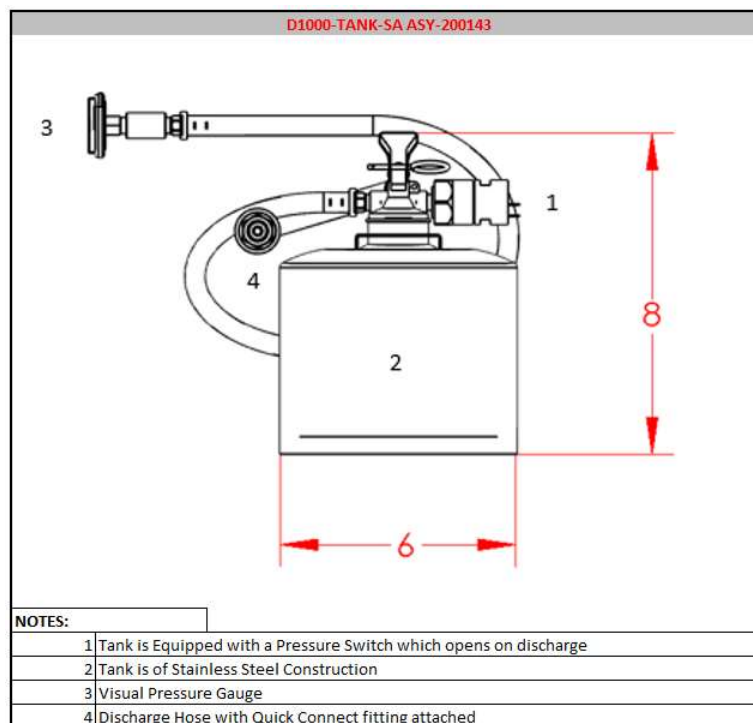
MODEL	PART NUMBER	Tank Information											
		TYPE	COMPLIANCE	MOUNTING CONFIGURATION	LENGTH (In.)	DEPTH (In.)	HEIGHT (In.)	WEIGHT (Lbs.)	VESSEL	CHEMICAL TYPE	VOLUME (mL.)	CHEMICAL WEIGHT (Lbs.)	PRESSURE (PSI)+8%
D1000-TANK-FC	ASY-200139	Self Contained Fire Suppression System	UL-1995	Integral to the Hood	N/A	6	8	9.4	Stainless Steel	Amerex 660	1300	2.2	102



TANK WITH AMEREX AND NOT CHARGED

D1000-TANK-SA

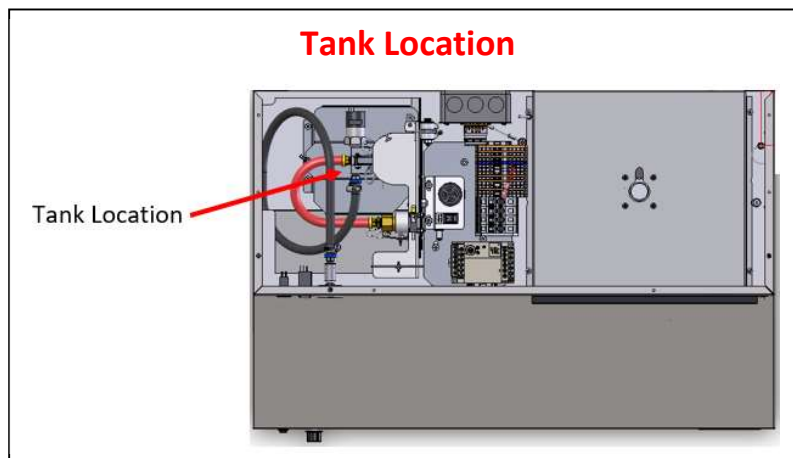
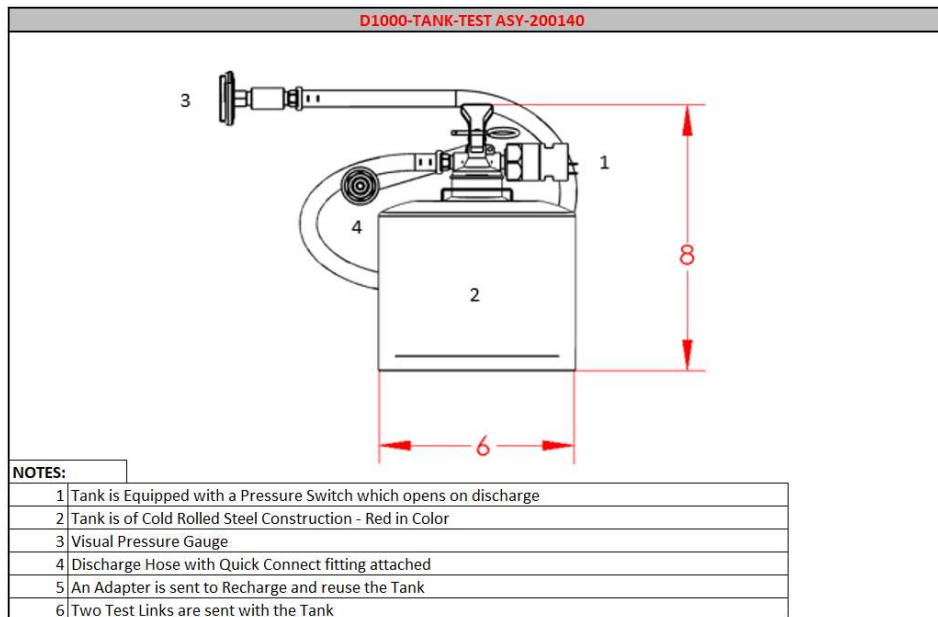
Tank Information													
MODEL	PART NUMBER	TYPE	COMPLIANCE	MOUNTING CONFIGURATION	LENGTH (In.)	DEPTH (In.)	HEIGHT (In.)	WEIGHT (Lbs.)	VESSEL	CHEMICAL TYPE	VOLUME (mL.)	CHEMICAL WEIGHT (Lbs.)	PRESSURE (PSI)+8%
D1000-TANK-SA	ASY-200143	Self Contained Fire Suppression System	UL-1995	Integral to the Hood	N/A	6	8	6	Stainless Steel	Amerex 660	1300	2.2	(Charge to 102 on location)



TANK TEST – NITROGEN CHARGED ONLY

D1000-TANK-TEST

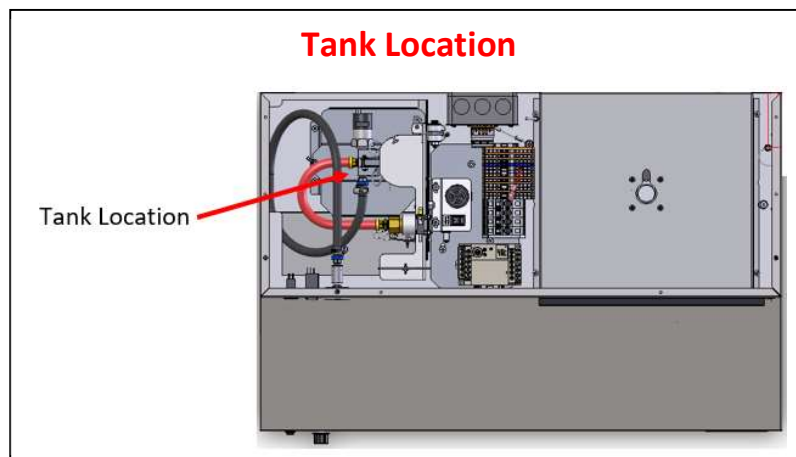
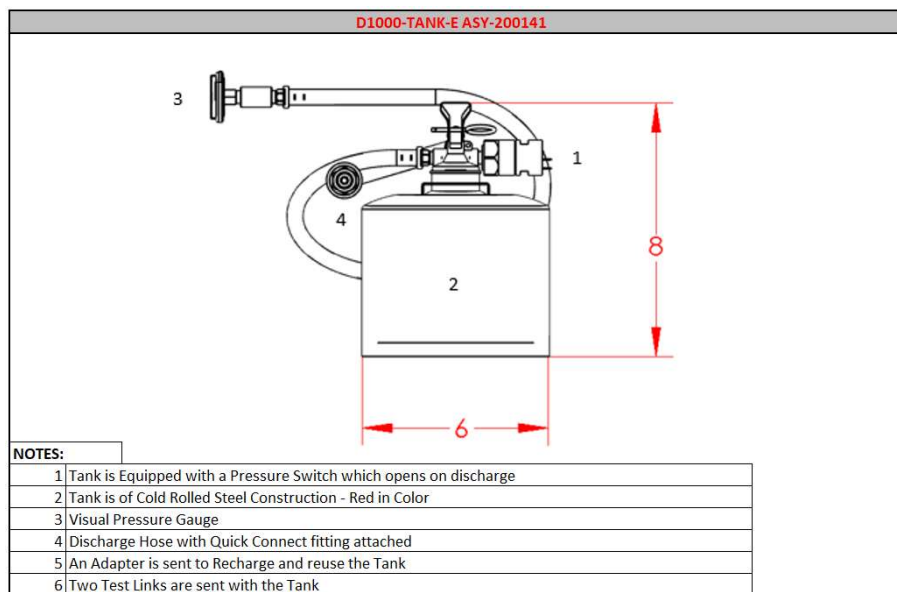
MODEL	PART NUMBER	Tank Information											
		TYPE	COMPLIANCE	MOUNTING CONFIGURATION	LENGTH (In.)	DEPTH (In.)	HEIGHT (In.)	WEIGHT (Lbs.)	VESSEL	CHEMICAL TYPE	VOLUME (mL.)	CHEMICAL WEIGHT (Lbs.)	PRESSURE (PSI)+-8%
D1000-TANK-TEST	ASY-200140	Self Contained Fire Suppression Test System with Nitrogen	UL-1995	Integral to the Hood	N/A	6	8	6	CRS	None	0	None	102



TANK NOT CHARGED

D1000-TANK-E

Tank Information													
MODEL	PART NUMBER	TYPE	COMPLIANCE	MOUNTING CONFIGURATION	LENGTH (In.)	DEPTH (In.)	HEIGHT (In.)	WEIGHT (Lbs.)	VESSEL	CHEMICAL TYPE	VOLUME (mL.)	CHEMICAL WEIGHT (Lbs.)	PRESSURE (PSI)+8%
D1000-TANK-E	ASY-200141	Self Contained Fire Suppression Test System	UL-1995	Integral to the Hood	N/A	6	8	6	CRS	None	0	None	(Charge to 102 on location)



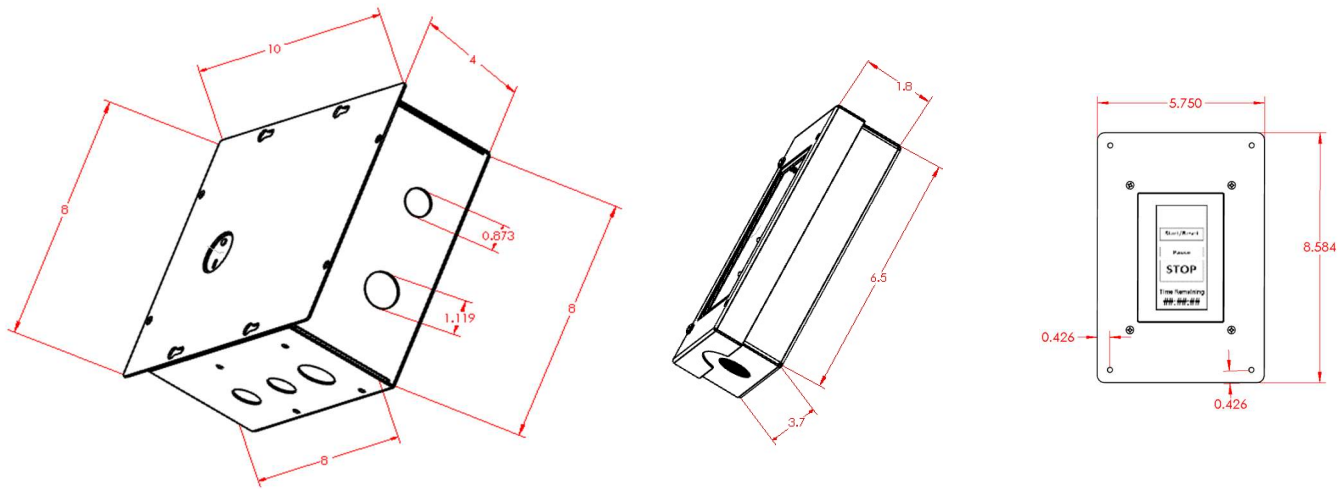
CLOCK BOX

(Included in NFPA Models)

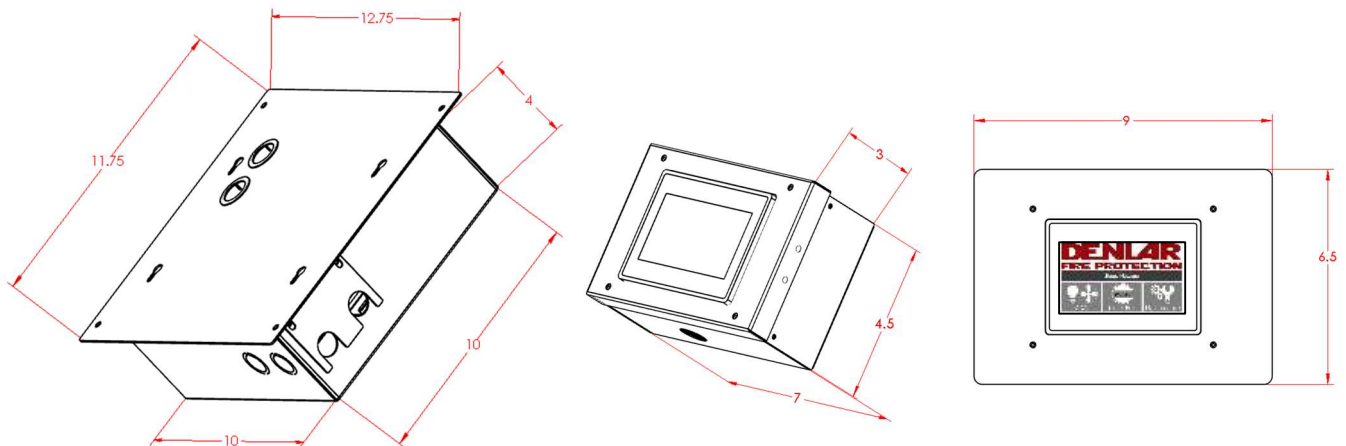
MODEL	PART NUMBER	ELECTRICAL INFORMATION								MATERIAL INFORMATION		
		VOLTAGE (AC)	PHASE	FREQUENCY (Hz.)	BREAKER SIZE (AMPS)	OPERATING CURRENT (AMPS)	FUSE (AMPS)	Touch Screen Voltage (DC)	OUTPUT CURRENT MAXIMUM (AMPS)	MOUNTING	WEIGHT (Lbs.)	CONDUIT
Clock Box	ASY-200047	120	1	60	15	0.1	0.5	5	2	Surface Mount or Flush	14	25FT.
Clock Box Pro	ASY-300064						1	24	10		18	16mm FLEXIBLE ENT CONDUIT

CLOCK BOX FEATURES											
	TWO HOUR TIMER	PASSWORD PROTECTED	ADJUSTABLE TIMER	CHANGE PASSWORD	ADA COMPATIBLE	LANGUAGE SELECTION	INPUT / OUTPUT TO A MONITORING STATION / ALARM SYSTEM	INTERACTS WITH THE HOOD	DISPLAYS USER INSTRUCTIONS	DISPLAYS HOOD FAULTS	LOCKS OUT IF THERE IS A FAULT WITH THE HOOD
Clockbox	Y	Y	Y	Y	N	N	N	N	N	N	N
Clockbox Pro	Y	Y	Y	Y	Y	Y	Y	Y	Y	Y	Y

CLOCK BOX DIMENSIONS

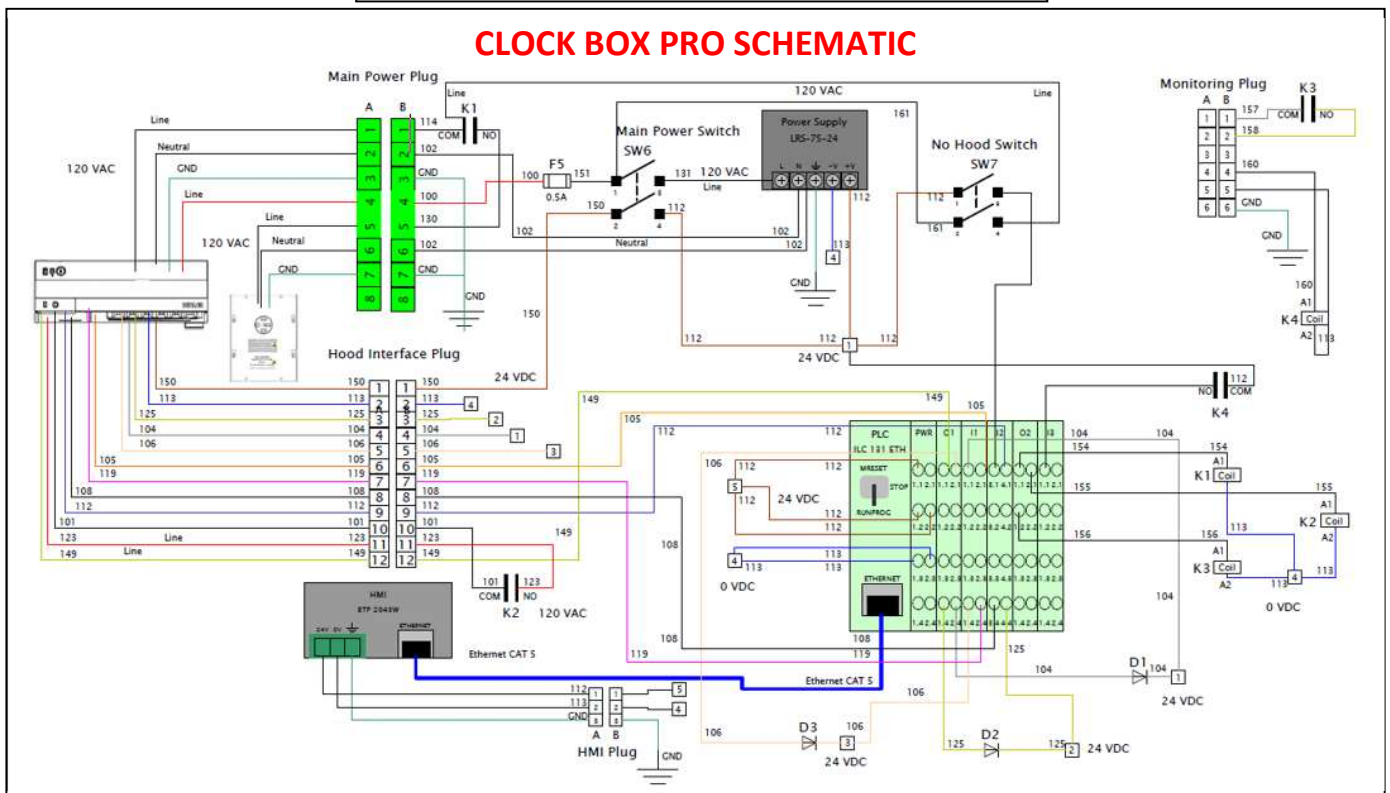
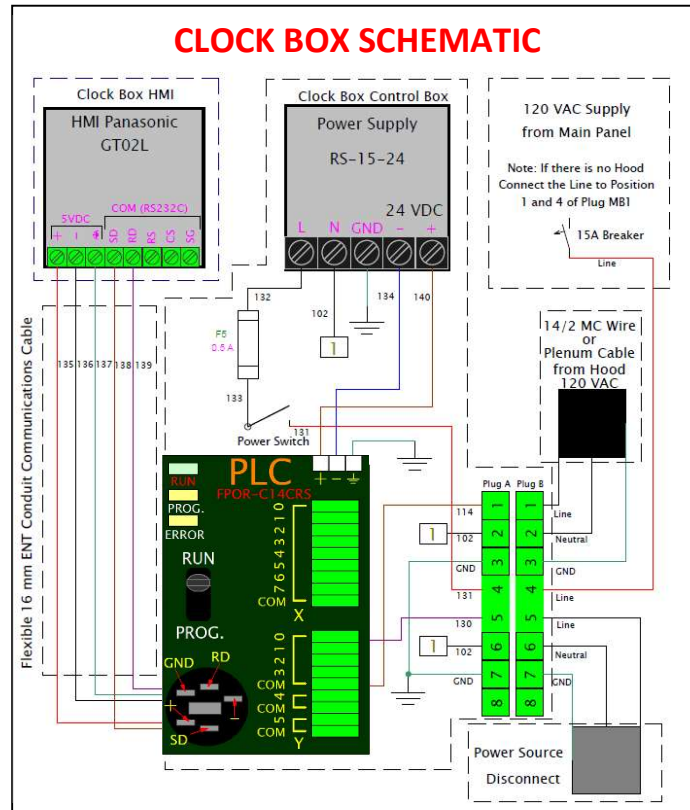


CLOCK BOX PRO DIMENSIONS



CLOCK BOX

(Included in NFPA Models)



MANUAL PULL KIT

D1000-MPK

(Included in NFPA Models)

The Manual Pull Station (D1000-MPK) is designed to discharge the D1000 Model when a user pulls the tab from the Manual Pull Station Face Plate. The D1000-MPK is provided with 25 feet Stainless-steel Cable and with three 90 Degree Corner Pulleys. It is required to have 7-10 inches extra of the Stainless-steel Cable at the Pull Station Box.

The D1000-MPK comes equipped with the following:

- 1x Enclosure 4" x 1.5" Octagon Metal Box
- 1x Manual Pull Station Face Plate
- 1x 1/2" ENT Conduit Connector
- 3x 90 Degree Corner Pulleys
- 1x 25' Stainless-steel Cable with Clevis Pin



1x Enclosure 4" x 1.5"
Octagon Metal Box



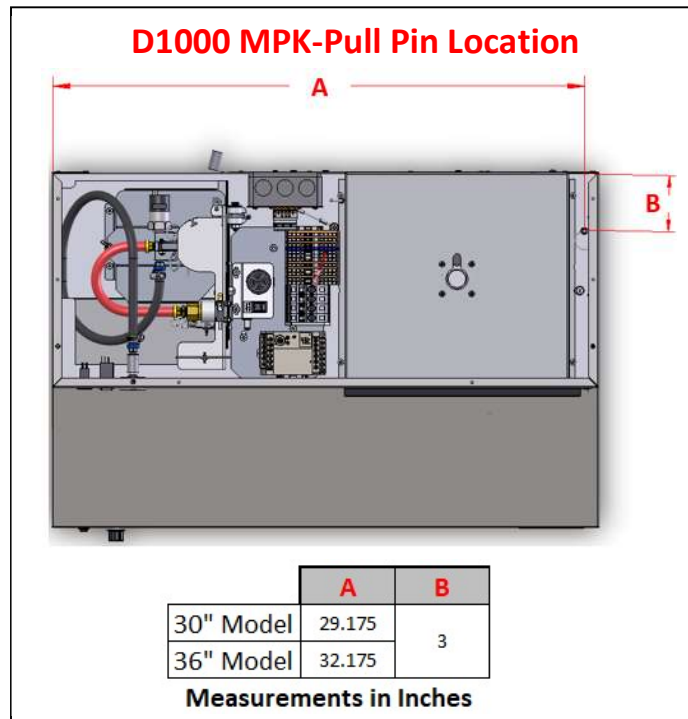
1x Manual Pull station
Face Plate



1x 1/2" ENT Conduit
Connector

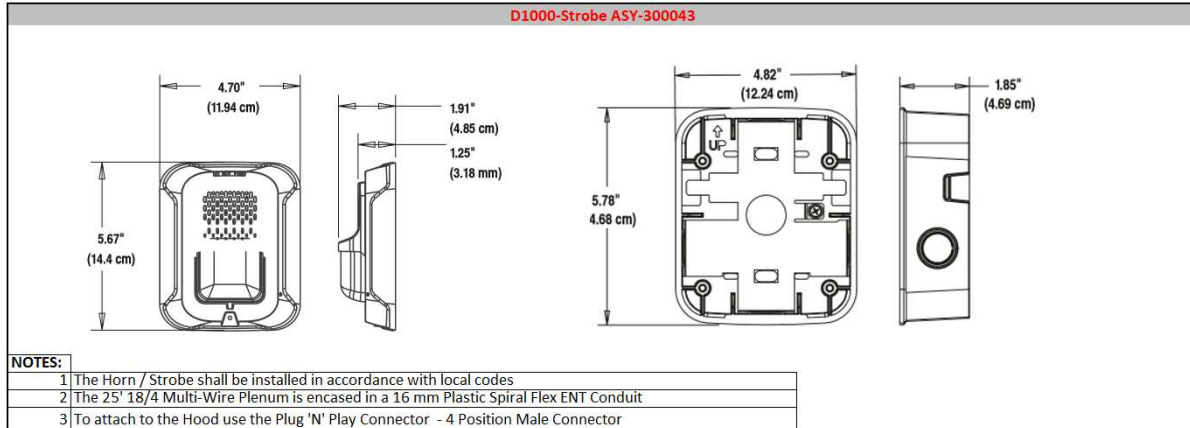


3x 90 Degree Corner
Pulleys



HORN AND STROBE

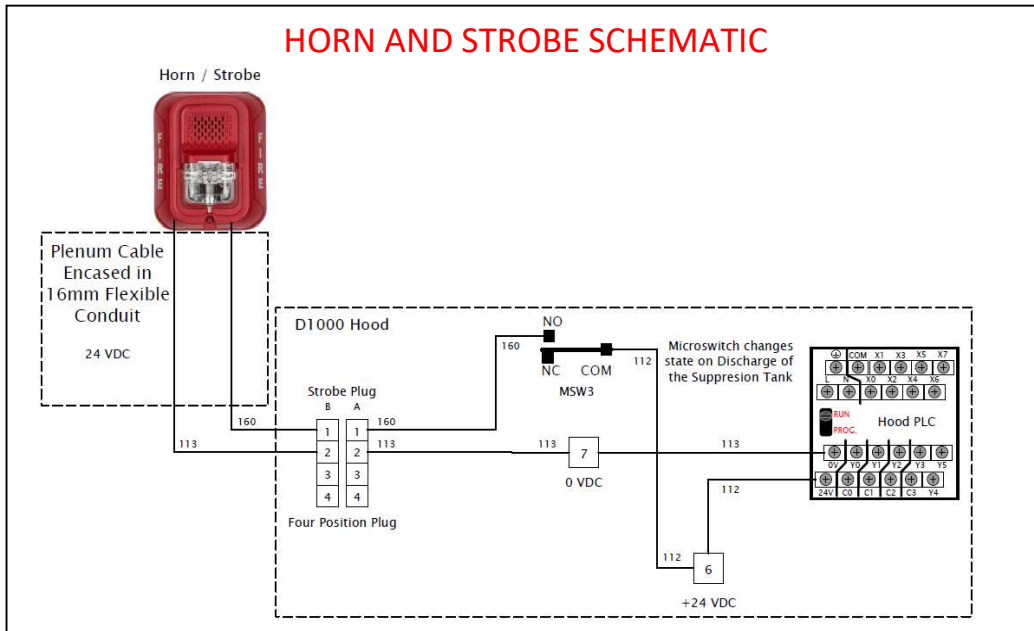
D1000-STROBE SPECIFICATIONS										
MODEL	PART NUMBER	VOLTAGE (DC)	WEIGHT (Lbs.)	LENGTH (In.)	DEPTH (In.)	HEIGHT (In.)	MATERIAL	MOUNTING CONFIGURATION	MOUNTING HEIGHT (IN.)	Approvals
D1000-STROBE	ASY-300043	24	2.4	4.82	3.77	5.78	PLASTIC	SURFACE MOUNT OR FLUSH MOUNT	SEE LOCAL CODES	UL, FM, State of California State Fire Marshal



Horn Output (dBA)			
Switch Position	Sound Pattern	dB Setting	dB
1	Temporal	High	89
2	Temporal	Low	83
3	Non-Temporal	High	90
4	Non-Temporal	Low	84
5	3.15 KHz Temporal	High	88
6	3.15 KHz Temporal	Low	82
7	3.15 KHz Non-Temporal	High	89
8	3.15 KHz Non-Temporal	Low	83

Light Output horizontal Dispersion	
Degrees	Percent of Rating
0	100
5 to 25	90
30 to 45	75
50	55
55	45
60	40
65	35
70	35
75	30
80	30
85	25
90	25
Compound 45 to the left	24
Compound 45 to the right	24

HORN AND STROBE SCHEMATIC



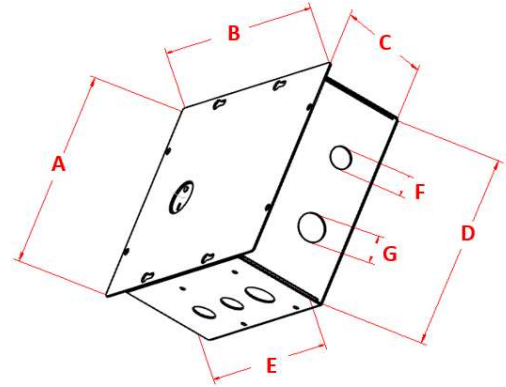
Vertical Dispersion – Wall to Floor	
Degrees	Percent of Rating
0	100
5 to 30	90
35	65
40	46
45	34
50	27
55	22
60	18
65	16
70	15
75	13
80	12
85	12
90	12

FAN BY OTHERS

MODEL	PART NUMBER	COIL RATINGS						MATERIAL INFORMATION			
		COIL VOLTAGE (AC)	PHASE	FREQUENCY (Hz.)	FUSE (AMPS)	FUSE TYPE	OPERATING CURRENT (AMPS)	WEIGHT (Lbs.)	MATERIAL	MOUNTING CONFIGURATION	MOUNTING HEIGHT (IN.)
D1000-FBO	ASY-300041	120	1	60	0.5	5X20mm CARTRIDGE	0.25	6.4	PLASTIC	SURFACE MOUNT OR FLUSH MOUNT	SEE LOCAL CODES

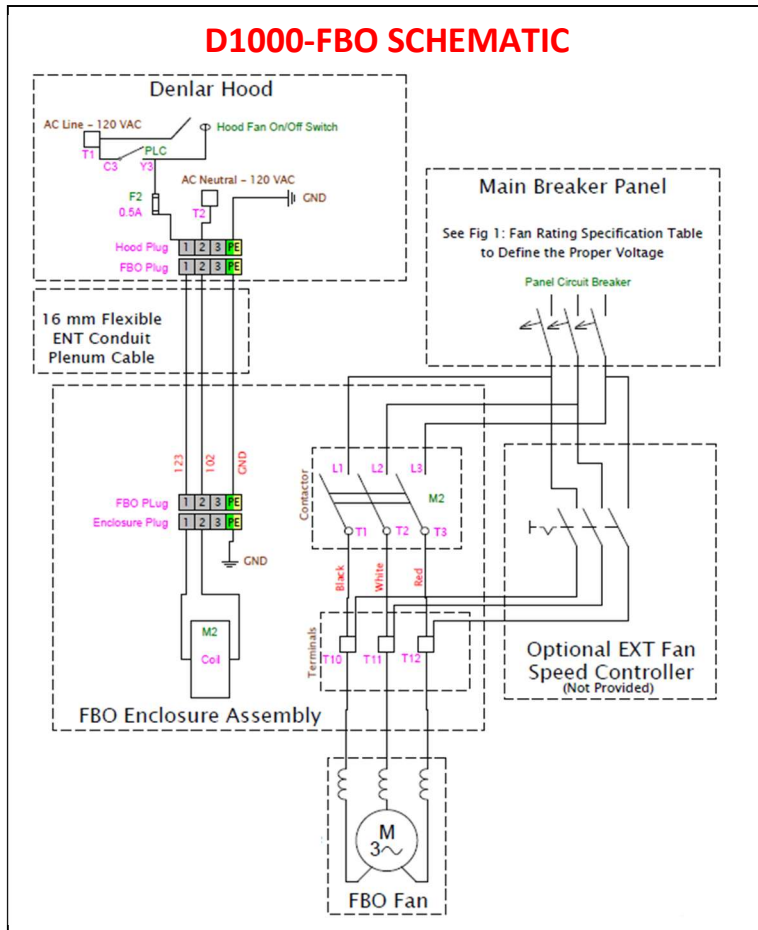
Fan Rating Specification			
Phase	Voltage	HP	Amps
1 PH	120	2	24
1 PH	240	3	17
3 PH	200-208	7.5	25.3
3 PH	220-240	7.5	22
3 PH	440-480	15	21
3 PH	550-600	20	22

D1000-FBO DIMENSIONS



Includes a 15' 16mm Flexibe ENT Conduit with Plenum Cable						
A	B	C	D	E	F	G
10.5	8	3.6	8	8	0.8	1.1
Measurements in Inches						

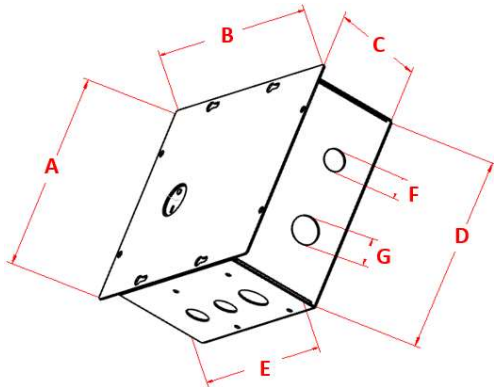
D1000-FBO SCHEMATIC



MAKE-UP AIR FAN CONTROL MODULE

MODEL	PART NUMBER	COIL RATINGS						RELAY CONTACT INFORMATION			
		COIL VOLTAGE (AC)	PHASE	FREQUENCY (Hz.)	FUSE (AMPS)	FUSE TYPE	OPERATING CURRENT (AMPS)	FUSE (AMPS)	RELAY CONTACT RATING (AMPS)	OPERATING CURRENT (AMPS)	OUTPUT VOLTS (AC)
D1000-MACM	ASY-300040	120	1	60	0.5	5X20mm CARTRIDGE	0.25	10	10	SEE FAN MODEL	SEE FAN MODEL

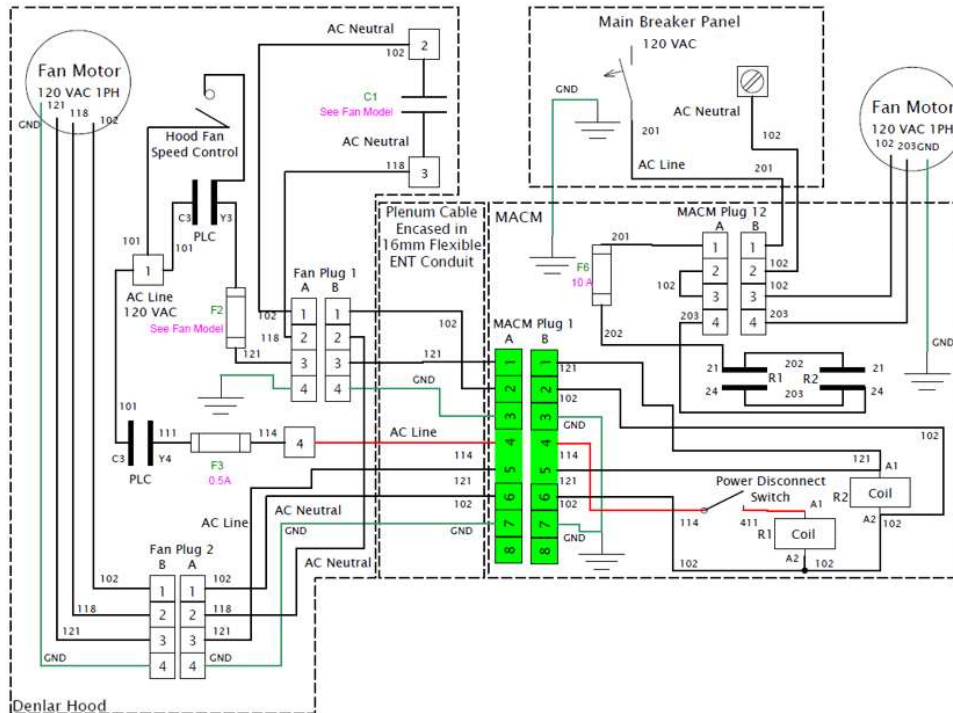
D1000-MACM DIMENSIONS



Includes a 15' 16mm Flexible ENT Conduit with Plenum Cable						
A	B	C	D	E	F	G
10.5	8	3.6	8	8	0.8	1.1
Measurements in Inches						

MATERIAL INFORMATION			
WEIGHT (Lbs.)	MATERIAL	MOUNTING TYPE	MOUNTING HEIGHT
6.4	GALVANIZED	SURFACE OR FLUSH MOUNT	SEE LOCAL CODES

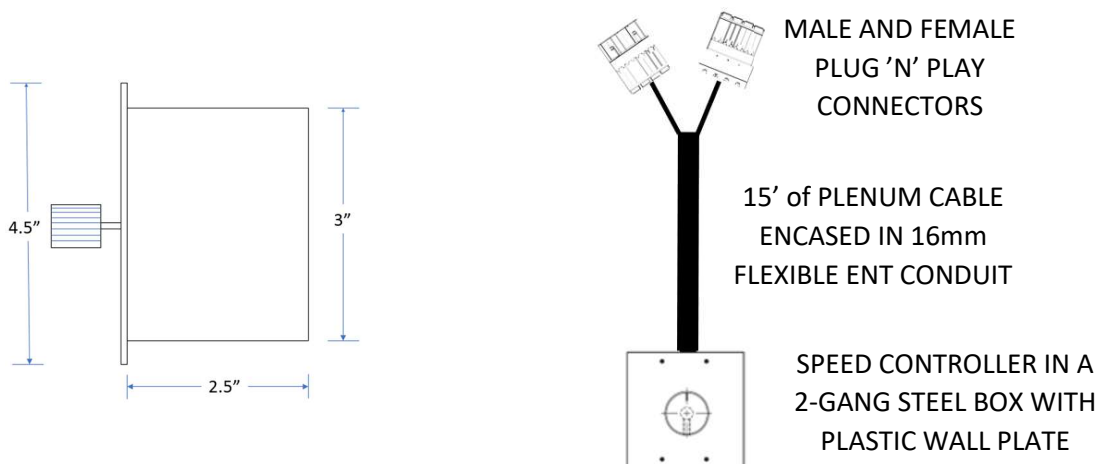
D1000-MACM SCHEMATIC



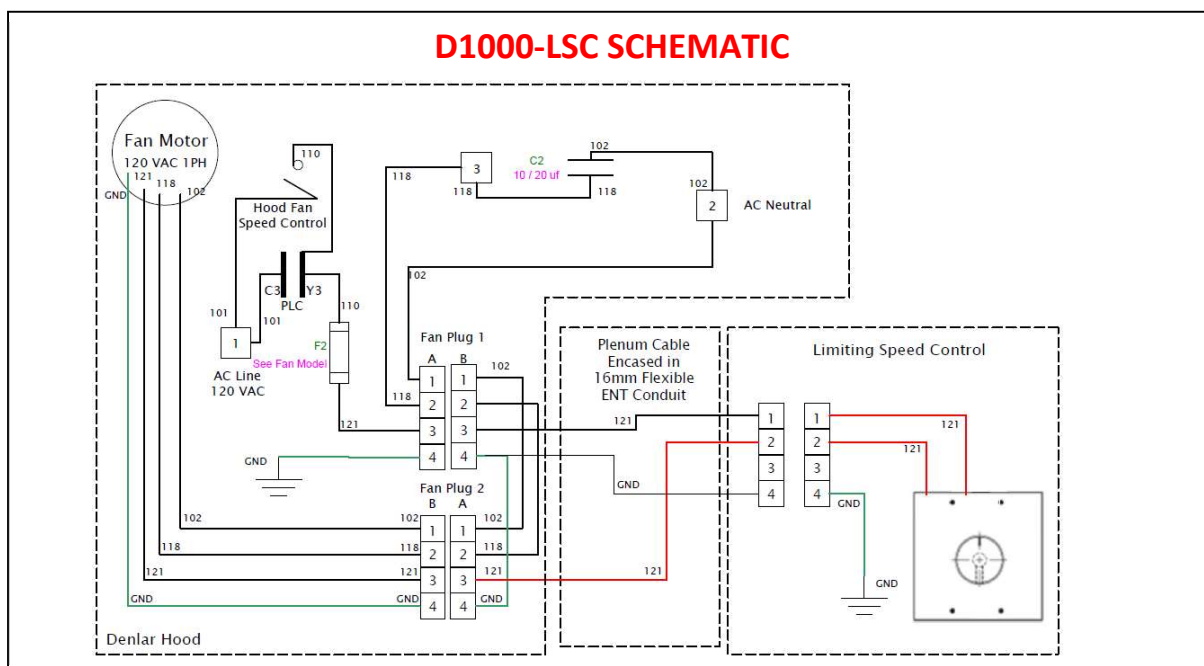
CFM LIMITING SPEED CONTROL

MODEL	PART NUMBER	ELECTRICAL					MATERIAL INFORMATION				
		VOLTAGE (AC)	FUSE (AMPS)	OPERATING CURRENT (AMPS)	PHASE	FREQUENCY (Hz.)	WEIGHT (Lbs.)	MATERIAL	MOUNTING CONFIGURATION	MOUNTING HEIGHT (IN.)	CONDUIT
D1000-LSC	ASY-300034	120	SEE FAN MODEL	SEE FAN MODEL	1	60	2.4	PLASTIC AND STEEL	SURFACE MOUNT OR FLUSH MOUNT	SEE LOCAL CODES	15FT. 16mm FLEXIBLE ENT CONDUIT

D1000-LSC DIMENSIONS

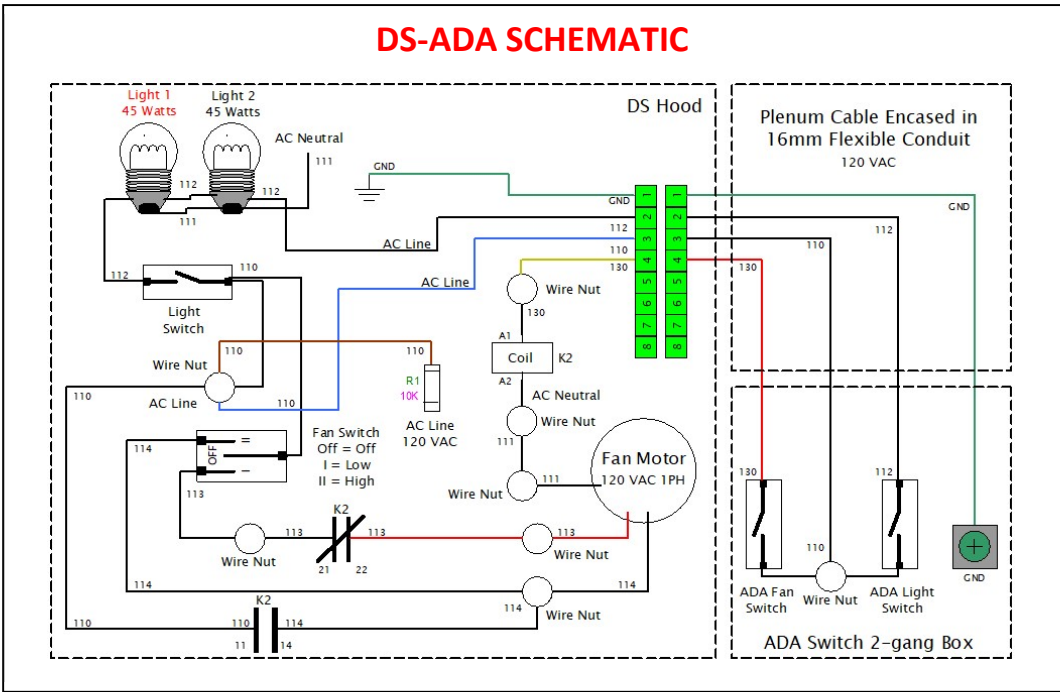
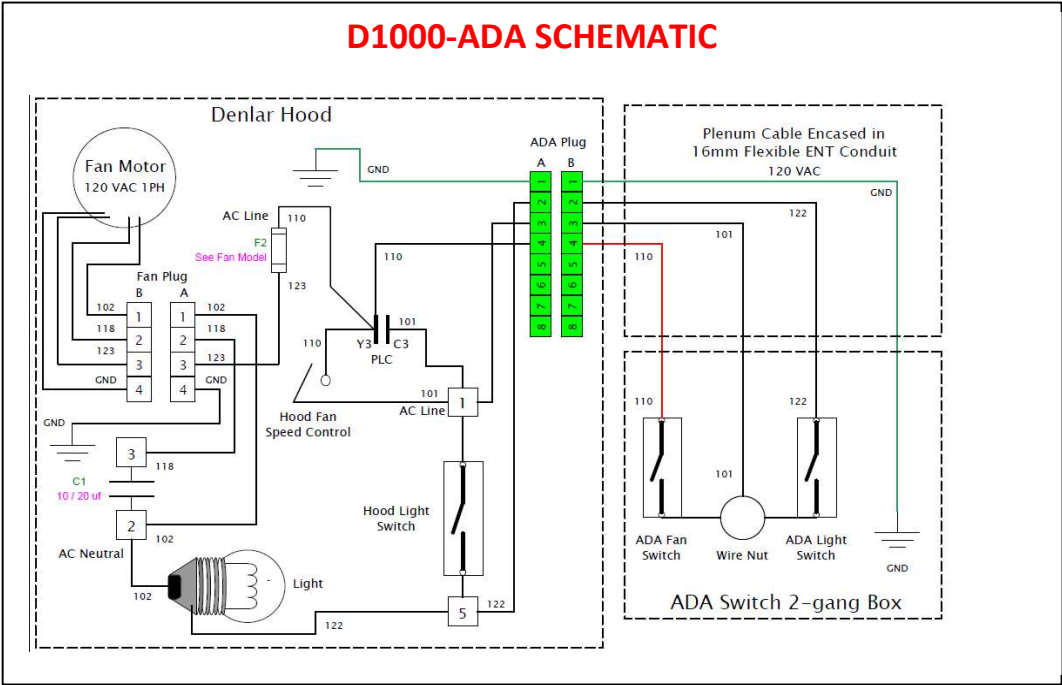


D1000-LSC SCHEMATIC



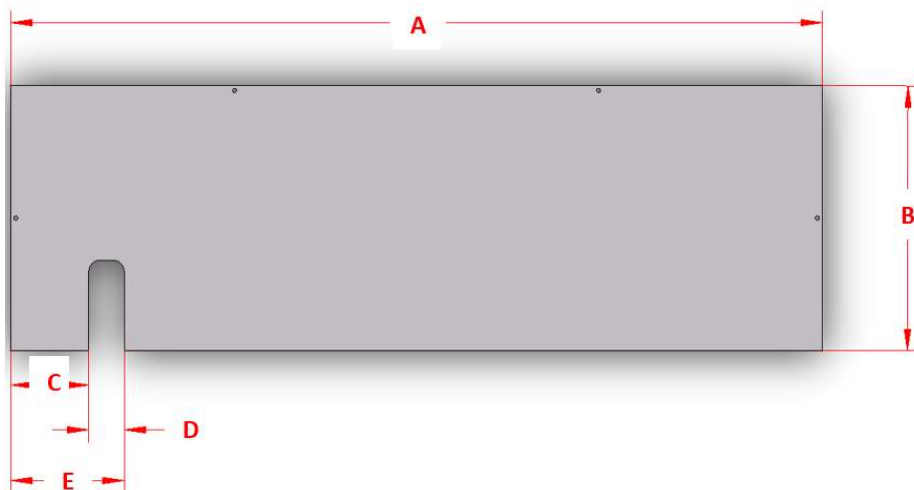
AMERICANS WITH DISABILITIES ACT CONTROLS

		ELECTRICAL INFORMATION					MATERIAL INFORMATION							
MODEL	PART NUMBER	VOLTAGE (AC)	FUSE (AMPS)	OPERATING CURRENT (AMPS)	PHASE	FREQUENCY (Hz.)	WEIGHT (Lbs.)	LENGTH (In.)	DEPTH (In.)	HEIGHT (In.)	MATERIAL	MOUNTING CONFIGURATION	MOUNTING HEIGHT (In.)	CONDUIT
D1000-ADA	ASY-200055	120	SEE FAN MODEL	SEE FAN MODEL	1	60	1.5	3.75	2.5	3	PLASTIC AND STEEL	SURFACE MOUNT OR FLUSH MOUNT	SEE LOCAL CODES	15FT.
DS-ADA	ASY-200175													16mm FLEXIBLE ENT CONDUIT



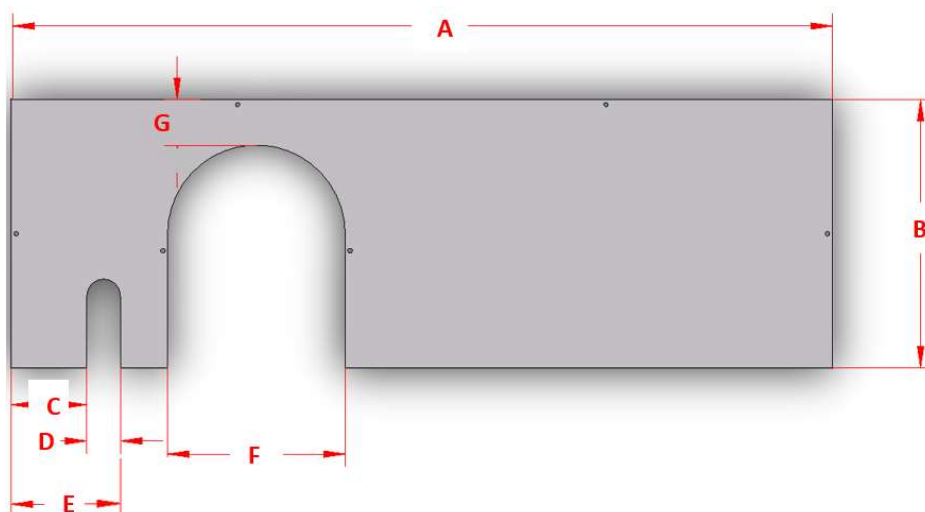
(D1000 Only)

TOP COVER FOR FRONT AND REAR EXHAUST MODELS



Model	PART NUMBER	MATERIAL	WEIGHT (Lbs.)	THICKNESS	A	B	C	D	E
D1030-TC F/R	ASY-200147	STAINLESS	3	0.0625	29.6	11.6	NONE	NONE	2
D1036-TC F/R	ASY-200153	STEEL	3.4		35.6		1.5	3.3	4.8
				Measurements in Inches					

TOP COVER FOR TOP DUCTED EXHAUST MODELS



Model	PART NUMBER	MATERIAL	WEIGHT (Lbs.)	THICKNESS	A	B	C	D	E	F	G
D1030-TCI	ASY-200013	STAINLESS	2.8	0.0625	29.6	11.6	NONE	NONE	2	7.7	2
D1036-TCI	ASY-200011	STEEL	3.2		35.6		3.3	1.5	6.8		
				Measurements in Inches							